

NB: CLICK ANY WEB LINKS THROUGHOUT THIS PDF

Vol. 35 No. 4
NOV. AD2021



"By Christ for Christ!"

© Copyright Creation Research

A.C.N: 083 158 347

Creation News

www.creationresearch.net

www.askjohnmackay.com

REJOICE - JESUS NEVER CHANGES



FROM THE WORD "And it came to pass, when the minstrel played, that the hand of the Lord came upon Elisha, and he said, Thus saith the Lord, Make this valley full of ditches." 2 Kings 3:15-16



John Mackay
International Director of
Creation Research

You know from our newsletters we've been asking prayer for rain at Jurassic Ark over the past 18 months of increasing drought. Well the good news is the Lord God has heard your prayers, which shouldn't surprise us since we've been telling people for ages that the same Creator God who sends the rain, also sends the drought.

It was the Creator Jesus who invented water – and demonstrated His control over water by walking on it, as well as dividing it as the Israelites crossed the Red Sea. It's no surprise that dealing with water is a simple thing for Him.

The kings of Israel, Judah and Edom had decided to attack their enemies the Moabites. Apparently, they made a tactical error in deciding to go the backway through the desert, without first

checking how much water was available. Finally in desperation they called upon the Prophet Elisha. Then that Spirit of the Lord came upon Elisha as the Lord God told the Israelites to dig ditches in the dry land, and though they would see no rain nor hear any storm - in the morning the ditches would be full of water.

Then Elisha added the punchline from the Lord - note well - the same God who is powerful enough to supply you streams in the desert overnight, will easily beat up the Moabites - so stop worrying! (Read it all 2 Kings 3:15-25)

That's why our pictures reveal several things. Yes - when the drought was becoming serious we did ask you to pray. But also in the realisation that it is God who also sends the drought, we took advantage and dug ditches to double the size of our dam, so thanks to those who supplied funds to enable us to do that.

Then we again asked you to pray for rain, as our dam became so dry, we ceased pumping from it in case we damage the pump with mud and grit. Then one Tuesday night it rained, Wednesday morning the dam was full and by Thursday frogs and toads had reappeared. Jesus never changes so give Him all the praise that's due to his name as Creator, Redeemer, Sustainer, Lord and God. Continue to pray with us that the Lord God will mightily bless what He has given us to do for his glory.



THE NEED IS NOW – Joseph Hubbard UK has been using his parents-in-law's small vehicle and we now have our first camp coming up on the Isle of Wight. We've had to hire a truck for £500. We first began appealing just before Covid 2020 for a new vehicle and giving stopped at £7000 (\$13000) when Covid hit. Covid bans are now lifted in the UK, and we need the remaining £5000 (\$9200).



Joseph Hubbard



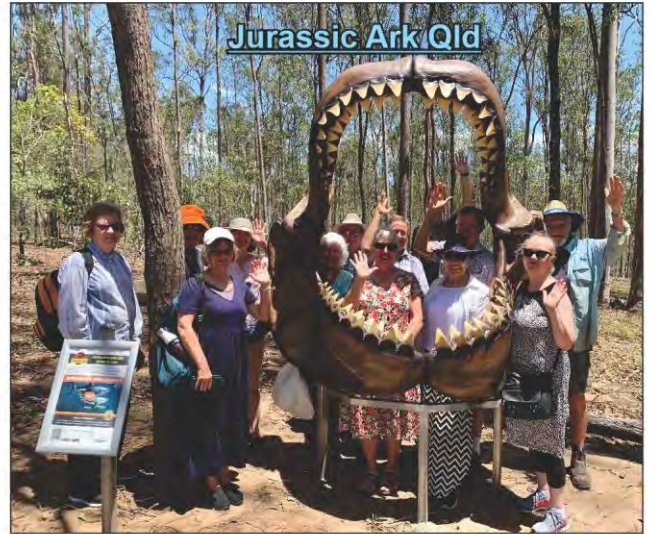
IS THIS YOU? A young man saved by Christ, called of God to work full time in this ministry, knows the Word of God and the Science. Want to win souls - not arguments contact info@creationresearch.net

NEED\$ YOUR \$UPPORT 2021 CLICK [HERE](#)



Martin Legemaate (left) has been our Canadian Field Trip leader and chief Museum worker as in establishing the Canadian Creation Research museum in Ontario. He's been working for the Covid Break completing a new display concerning rapid oil formation which covers everything from the fossils which produce it, to the evidence oil got there quickly to a history of its use in Ontario. Surprisingly the first oil well was in Ontario Canada and not the USA. Plus the fossils found in the source rocks such as Trilobites. Even when you are digging in many places in Southern Ontario, you can smell oil everywhere. Pray for Martin message latest part of this display it's a two year part time project to upgrade some of the old petroleum pumps from the 1920s and 30s. The displays really looking good.

FIRST SENIORS GROUP VISITS JURASSIC ARK (right) and yes we (and they) provided extra seating – truly a wonderful day. One German senior commented 'We have fossils in the Solnhoffen that look just like these!' How right she was as the old name for that area is JURA from which we get the word Jurassic. The word was even used by Julius Caesar in his book the Gallic Wars. Jurassic has nothing to do with dinosaurs or millions of years.



USE PAY PAL TO SUPPORT CREATION RESEARCH
 via accounts@creationresearch.net.
 or WEB GIVE via www.creationresearch.net click DONATIONS
 ALSO TO ADDRESSES ON BACK PAGE

Creation Discovery Centre
 World-Class Fossils
 Theatre Ark Model and more
OPEN Monday to Saturday 10am to 3pm
 Phone: 0487 343 348 or 0423 243 211

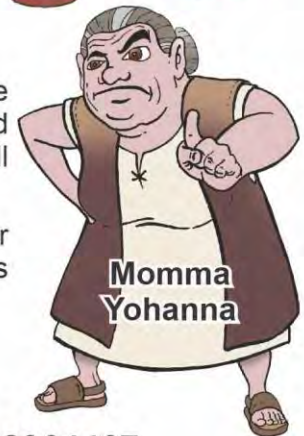
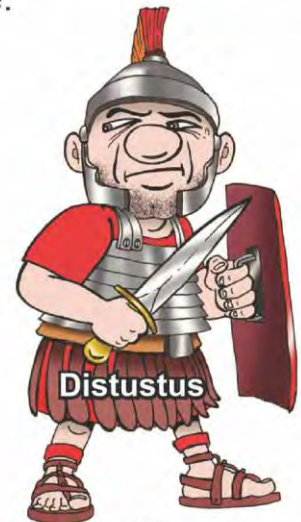
OVER 25 PEOPLE VISITED THE CREATION DISCOVERY CENTRE TASMANIA on a recent Saturday some staying hours to soak up all the information on display. Tasmanian Covid Border restrictions have been really impacting tourism numbers generally but we have had opportunities to encourage and challenge visitors with the true history of God's world. One of these was Darryl, a young Christian who had dropped out of his University science course due to the pressure of evolutionary teaching. He has shared that the discovery center was a huge encouragement to him. Another year 12, student Vanessa was so encouraged in her faith and as she reluctantly left to keep up with her family said "I will be back, I love this place!". Supporting young Christian people and families in their faith journey is our core purpose so pray many more will hear about us and come along to build on their foundations of trust in the Scriptures. And for Border openings to enhance the crowds.

CREATION DISCOVERY CENTRE
 Inspection Head Wharf, Beauty Point, Tasmania.
 Adults \$7, Child \$4, Family (2 adults + children) \$20 (children under 4 – free).
 Excellent displays Bible History, Archaeology, Flood, Fossil and video.

GREAT NEW KIDS BOOK FROM CREATION RESEARCH



Our Hero Itzak (Starboy) was a teenager in Nazareth just before Jesus was born. His father grew fruit and veg, and as farmers did in those days, they planted their crops by a star calendar. Itzak loved to watch the stars, and one night he spotted a new one. What did it mean? Join Itzak and his sister Esther as they discover fascinating Astronomy clues, exciting Bible and History facts, leading to a thrilling meeting at Bethlehem. A great gospel challenge for kids and parents alike.



Enjoy the fascinating and often humorous adventures of Itzak and his sister Esther, whose journey some 2000 years ago leads us through an Israel ruled by Pagan Romans who had no idea a Saviour would soon to be revealed. You'll love the fabulous artwork. Size A4, full gloss colour, 60 pages. Suits 10 years +.

Author John Mackay is International Director of Creation Research and has a passion for making the Gospel of Christ understandable for all ages. His best selling children's books below are designed to make the Bible's fact-based faith come alive for family and kids.



BOOKS
\$25 each
Post Free

SAVE 25%
BUY 3 GET 4TH
ONE FREE

ORDER BY
PHONE 07 32064467
EMAIL info@creationresearch.net
WEB SHOP below

MORE GREAT CHILDREN'S BOOKS by John Mackay
only \$25 each Inc p&p available from www.creationresearchshop.net

NEED\$ YOUR \$UPPORT 2021 CLICK [HERE](#)



When we did ministry in Rockhampton earlier this year, we encountered Malachi the Stone man. Malachi runs a ministry showing people how clever you need to be to make stone tools, so there is no such thing as a primitive person. He runs camps, tours schools and works with indigenous people who have lost the art of making stone tools. Malachi is a Christian so we invited him to Jurassic Ark and he's pictured speaking to a large group of kids and displaying some of the stone tools he's made, plus showing them how to start a fire without matches or petrol.

Some of the things Malachi has made are shown in montage (below) but the skill that fascinated the kids most was making rope on the spot and then having a tug-of-war with a rope manufactured just 20 minutes earlier. Malachi has reached one conclusion which really helped the kids and the visitors to Jurassic Ark – making stone tools is not a primitive activity. You have to be clever to make stone tools. Particularly when you discover that the sharpest tools are not made with metal but with flint and surgeons still use them - just like Abraham did.



MALACHI
The Stone Man



And did you know that some stone tools were made for left-handed people, and the evidence from stone tools tells us that the number of left-handed people has not changed much since stone tools were first manufactured in Australia. You must deliberately create left handed tools for use by left-handed people, so they are very uncomfortable in your right hand.

Pray for Malachi as we catch up with him again later this year and pray for his ministry to all the students as he reminds them God made man in his image which is why we can create stone tools which can never happen by themselves.

USE PAY PAL TO SUPPORT CREATION RESEARCH

via accounts@creationresearch.net
or WEB GIVE via
www.creationresearch.net/Donations



Curator Daryl and helper Ben use their muscles and sweat to excavate what has turned out to be the best preserved section of log found to date. A little cleaning revealed a fabulous side section of a tree with two broken branches coming off with break marks clearly preserved. Now the rest of the tree waits to be excavated.

It can be hard work but with three schools and several other groups post covid getting to see our fabulous display fossil logjam pointing to Noahs Flood , the effort is worth it.

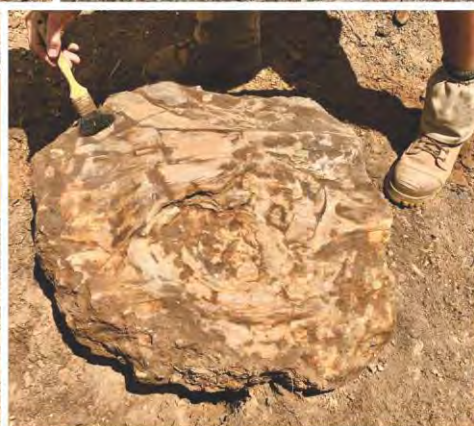
Praise the Lord with us for these great finds. They really are making Jurassic Ark a world class exhibit. But we'd love to find a dinosaur in the midst of these trees as well. Keep praying.



VOLUNTEER MARIUS helps curator, Daryl, excavate a new find. And yes it looks like a cut slab of wood to us as well, or as some people have commented: "Is it the top of the coffin?" At the moment we don't know anything more than it's an exceptionally flat surface of a log. It has also certainly been laid down crossing the strata and so by definition is a polystrate log, and an exceedingly well preserved example of the rapid burial of a tree that grew somewhere else and has been flood deposited. Thankyou Lord Jesus. Become a volunteer. Contact us at info@creationresearch.net.

**USE PAY PAL TO SUPPORT CREATION RESEARCH
VIA accounts@creationresearch.net.**

NEED\$ YOUR \$UPPORT 2021 CLICK [HERE](#)



Curator Daryl and helper Ben use their muscles and sweat to excavate what has turned out to be the best preserved section of log found to date. A little cleaning revealed a fabulous side section of a tree with two broken branches coming off with break marks clearly preserved. Now the rest of the tree waits to be excavated.

It can be hard work but with three schools and several other groups post covid getting to see our fabulous display fossil logjam pointing to Noahs Flood , the effort is worth it.

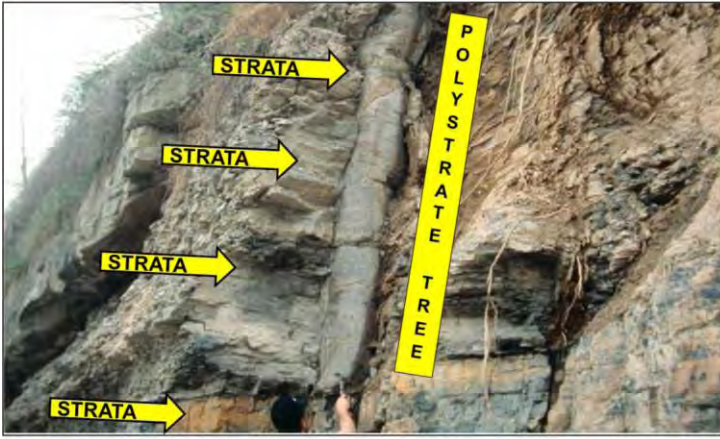
Praise the Lord with us for these great finds. They really are making Jurassic Ark a world class exhibit. But we'd love to find a dinosaur in the midst of these trees as well. Keep praying.



VOLUNTEER MARIUS helps curator, Daryl, excavate a new find. And yes it looks like a cut slab of wood to us as well, or as some people have commented: "Is it the top of the coffin?" At the moment we don't know anything more than it's an exceptionally flat surface of a log. It has also certainly been laid down crossing the strata and so by definition is a polystrate log, and an exceedingly well preserved example of the rapid burial of a tree that grew somewhere else and has been flood deposited. Thankyou Lord Jesus. Become a volunteer. Contact us at info@creationresearch.net.

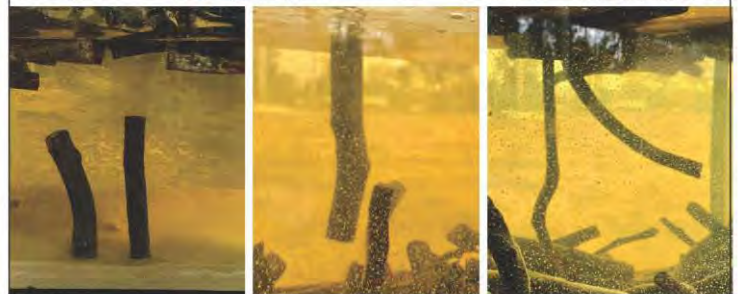
**USE PAY PAL TO SUPPORT CREATION RESEARCH
VIA accounts@creationresearch.net.**

NEED\$ YOUR \$UPPORT 2021 CLICK [HERE](#)



FANTASTIC EVIDENCE AT JURASSIC ARK as we demonstrate some of the real proofs that rock layers are deposited quickly, and that floating trees do sink vertically before they fall over horizontally. Such petrified trees have all been fully saturated before being buried which is why they have been so easily squashed without shattering. That's a principal boatbuilders discovered ages ago, to bend wooden planks.

Ranging from our now famous polystrate tank where we use sticks as trees, right down to our mini experiment using match sticks in a big glass to show that all slivers of wood behave in the same way - they float horizontally, then they soak water in bottom first, stand up vertically and then sink until they are fully soaked - then finally fall over. This is true whether they have roots on not, so standing trees buried in the rocks don't indicate that's where they grew, only where they sank.



INTRODUCING CREATION RESEARCH MUSEUMS AUSTRALIA

Decades of finding fabulous fossils, collecting evidence world wide, is now on display. Creation, Fall, Flood, Babel and Bible for all to see.



Bookings QLD Daryl 0416 474 792 Directions, Cost & Times

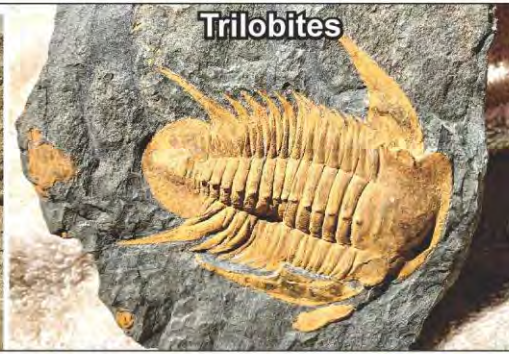


Bookings Tassie Craig 0487 343 348 Directions, Cost & Times



AUSSIE ONLINE NEWSPAPER MUSEUM PROMO for our Creation Museums in Tasmania and Queensland with full pages in New Life and month's long advertising program on Radio. Thanks for all whose donations help us promote this so people can see God's Word is true from the beginning. 3 school groups post Covid PTL.

See <http://www.nlife.com.au> click latest edition page 18



In Australia Linda Strydom continues to sort and catalogue our fabulous MUSEUM collection, just some of which are shown on this page from around the globe starting above with some absolutely spectacular trilobites fossilised as they travelled, pursued by a catastrophic flow of mud.

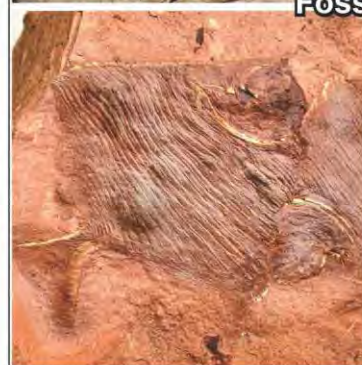
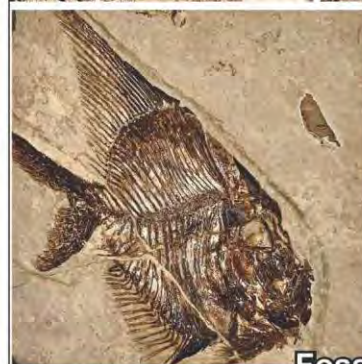
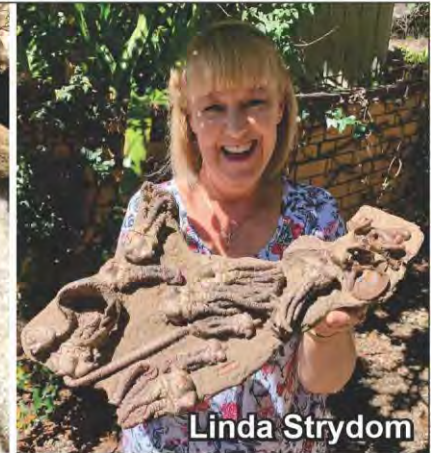
At right, the weird looking ones are not space aliens, but earthly crinoids. Once thought to be extinct yet now found alive and well on our Great Barrier Reef and in many places around the globe. Linda is really enjoying both cleaning our fossils and sorting them for display to the public.

Pray for this museum project to come to pass as we long for a big display area building somewhere from Sunshine coast to Gold Coast or west to Toowoomba. **Anybody with a building for free? Get in touch.**

Our spectacular fossil fishes (right) were obviously buried whole with many preserved in three dimensions with intestines intact. They also form part of our MUSEUM collection, so we need you to get right behind a museum project and donate now towards the cost of storage and presentation as well as staff labour involved.

At present Linda is involved in categorising each of our multi thousands of fossils so we know exactly where they are, where they came from them, who found them etc so our MUSEUM file is beyond dispute as evidence of massive catastrophic destruction of life at the time of Noah's flood.

And yes let's be honest, you have not seen fossils such as these in SECULAR MUSEUM displays. Continue your gifts to support both the collection and acquisition of these all around the globe, specially as borders and travel show signs of slowly re-opening. All our specimens are beautifully preserved so keep watching each issue for more.



AUSTRALIA Head Office: P.O. Box 260 Capalaba. Qld. 4157 Ph. (07) 3206 4467 or 0488 740 407
 Email: info@creationresearch.net

www.creationresearch.net
[QnA: askjohnmackay.com](mailto:QnA:askjohnmackay.com)

CANADA 36 Parkside Drive Uxbridge ONT L9P-1K7
 Ph: (905) 852 3470

NEW ZEALAND 3A The Circle, Manly Whangaparaoa 0930 Ph. 021 989 229

USA P.O. Box 281 Hartsville TN 37074
 Ph. (931) 260 8671 or (931) 537 3180
 USA www.creationresearchusa.org

UK PO Box 286
 Oswestry SY10 1GD
 Ph: 0161 371 1877 or Joseph 07713 681 406