

April 2025



“A wicked and adulterous generation seeks after a sign,” (Matthew 16:4 NKJV)

Many people when confronted with the gospel first want proof that God exists. When asked what proof they want there is often some requirement of a miraculous appearance of God before them. While the Jewish leaders in Matthew 16 obviously believed in God, they were seeking a miracle from Jesus to prove his authority. He responded that *“no sign shall be given to it except the sign of the prophet Jonah.”*

This was not the first request Jesus had for a miraculous sign to prove who he was. Early in his ministry we read of this encounter: *‘The Jews then responded to him, “What sign can you show us to prove your authority to do all this?” Jesus answered them, “Destroy this temple, and I will raise it again in three days.”’* (John 3:18-19 NIV)

On both occasions, Jesus gave the same response alluding to his death and resurrection on the third day and that this will be the only sign given. At Easter, this is what Christians remember. That Jesus Christ our creator became our saviour having known his entire ministry that this was the path that he must walk for us. Did he understand that this was his mission from the time of his childhood? What a burden he bore for us! His resurrection is the central proof of the authority of Jesus Christ. His incredible creation is but a tool that is available to us to direct others to this core reality, that Jesus Christ is risen!

Enjoy reports from our work around the world, the latest creation headlines and some more in-depth reviews of recent scientific research.

USA NEWS

Joe Hubbard spent February 25 through March 25 in the USA conducting research and speaking in collaboration with our USA representative Glenn Wilson. Joe gave 9 talks to 6 churches, plus talks to 3 homeschool groups and one community youth group. During this time, Glenn spoke in one church and a public-school class. Together, they led 4 fossil field trips with about 25 people each time. In total, Joe spoke to 50% more people than last year in 50% less time.

Please welcome, Dennis and Cheryl Goke, and their son Matthew, as the newest members of the CR-USA team. They jumped right in during Joe's visit by arranging homeschool talks and a homeschool fossil field trip, and CR-USA shifted a lot of their ministry resources to their home for storage. They are truly an answer to our prayers.

In addition, Joe and Glenn spent time making recordings with David Rives Ministry (below). Joe recorded 7 shows and Glenn recorded 2 shows for future release on the Genesis Science Network.



UK NEWS

While Joseph spent much time in the USA since our last Enews (see report above) the UK team have continued with museum upgrades that will enable self-guided touring. Diane Eager will be in the UK in April and May for the conference and for other activities

around the Museum in Oswestry (refer to events below). Please call in and say G'day if you are in the area from 17 April to 7 May.

Australian NEWS

HEAD OFFICE UPDATE

John and Josiah preached in Toowoomba at Garden City Baptist Church last Sunday. Went well, Praise the Lord.

Thanks to all those who have contributed to our replacement ministry vehicle following the slow death of our 17 year-old station wagon. We are really enjoying the five year-old Toyota RAV4.

Please pray for Anne Mackay, who is in a care home, suffering from complications from lack of mobility. John visits daily and preaches at the care home church on many Sundays. Last Sunday's talk was to a full house, for which we are praising the Lord. The topic was Jesus' challenge to "consider the lilies" and "seek first the kingdom of God" (Matthew 6: 28-33). Please pray for staff and patients in care homes that Jesus will draw them to himself.

MEET REBECCA, whose journey has taken her from Mount Isa to Helsinki and London, and now back to Brisbane. Rebecca supports Creation Research through administration, branding, and marketing and together with her family has felt a strong calling to support the ministry at head office and the mission of Creation Research.



VICTORIAN ROAD TRIP

What a blessing was had as Craig Hawkins and Derek Wells went on the road again in late March with even more fossil displays this time to the upper Murray River region of Victoria. Corryong Baptist, in the heart of Man from Snowy River country, hosted four sessions and we received much positive feedback and a lot of interest in the displays. Some fossil enthusiasts even travelled from Albury to show their fossils to us.



Craig with Pastor Graeme and Fossil Display at Corryong Baptist

Over 80 people came to the homeschool event in Yackandandah. We learned later that one young lad who loves God, told his mum that he was so excited because God had answered his prayers to have someone come and talk to him about dinosaurs. Your support of Creation Research helps us to encourage young families like this and give confidence to the kids that the Bible is true from the very beginning.



Nearly 100 high school students were spoken to at Wodonga over 3 sessions including a question/answer time where there was much enquiry about how the Bible explains the world we live in.

If you would like the Creation Fossil Road tour to come to your area please contact us at info@creationresearch.com.au. See events below for the Tasmanian tour in May and we are considering a trip to South Australia in 2026 so contact us early to register your interest.

We were given a couple of opportunities to look for some fossils whilst in Victoria including the morning after we got off the ferry in Geelong. We found some great examples of Graptolites, believed to be an extinct floating coral. These were immediately put to good use as we gave one to Joey, the super-nice owner of Broadford Kebab shop. He and his wife are Alawite Christians from



Lebanon and said they were getting goosebumps hearing how fossils like these prove the Bible's flood story. We had the opportunity to encourage them in their faith before we continued our journey.

The map (right) shows the wide extent of Graptolite sites we have found across Tasmania and Victoria.

Seekers keep coming to the Tasmanian Creation Discovery Centre

One middle-aged couple, after being amazed at their visit to the museum said "we are looking for something, we just don't know what it is". They were given resources and encouraged to seek Jesus. An atheist nurse who knew there was evidence of cancer in dinosaur bones queried why God would make the world like that given her understanding that they have been dead for millions of years. The response that the Bible says God made the world very good, and dinosaurs on the same day as mankind really got her interested. The good creation did not include cancer but is a result of Adam's sin. So Christians beware that inserting God into millions of years means he would be responsible for cancer in dinosaurs not Adam, and non-believers know it.

Upcoming Events 2025

Australia

Sunday 4th May: Ulverstone Baptist Church 10a.m. Craig Hawkins

Friday 9th May: Sheffield Men's Pizza Night 6.30pm Craig Hawkins

CREATION OF TASMANIA TOUR

Well known Tasmanian musician Steve Atkins has teamed up with Craig Hawkins to bring an evening of music and creation teaching in Tasmania. Keep tuned for further details or call Craig on 0487343348 if you would like to host an event.

Friday 23rd May: Citywide Baptist Church (check times)

Saturday 24th May: Citylight Church Kingston (Tas) (check times)

Saturday 31st May: Deloraine Gospel Chapel 6.30 pm

OPEN DAYS AT QUEENSLAND CREATION DISCOVERY CENTRE AND JURASSIC ARK. Plan to join us to rejoice in what God has done and see the great new displays. Further details of dates to be advised. Group visits by appointment welcome. Last Friday we had a motorcycle club from Kingaroy visit Jurassic Ark.

United Kingdom

Saturday 26th April: '**Contending for Creation**' - **Day Conference** - Holy Trinity Church, Oswestry - with speakers from both Creation Research and Answers in Genesis. For more details click [here](#)

Topics include: Why does believing in creation matter? Are mutations evidence for evolution? and How can Science and Christianity go together?

Speakers: Joseph Hubbard, Steve Chedgzoy, Diane Eager, Simon Turpin and Prof. Steve Taylor.

October 9th -11th: **The Record in the Rocks Conference**, Woodhouse Eaves Baptist Church, Loughborough, Leicestershire.

Further details of conferences will be provided at www.creationresearchuk.com

If you have any queries about ministry in the UK, including field trips, meetings and museum visits, please contact us at: info@creationresearchuk.com

UK Field Trips

See the evidence for Creation, Noah's Flood and rapid processes in the UK. Exciting and informative Field Trips with Joseph Hubbard and Creation Research colleagues. Details and sign up forms click [here](#).

- May 10th - Valley Of Lime - Derbyshire
- May 20th - Hunstanton - Lincolnshire
- June 14th - Creswell Beach - Middlebrough
- July 26th - Valley of Lime- Derbyshire
- July (Date TBC) - Abereddy Beach - Pembrokeshire
- Aug 2nd - Kilv Beach - Nth Somerset
- Oct (Date TBC) - Carmouth Field Trip

United States of America

Keep tuned for Joseph Hubbard and Glenn Wilson in the USA during 2025

Canada

For details contact Martin Legemaate: (www.creationresearchontario.com) or email creationresearchontario@hotmail.com. 12919 Warden Ave, Stouffville Ontario Canada L4A-3X9

Saturday 14th June: 'Kawartha Lakes Field trip' (Spring)

Saturday 21st June: 'Open House' Creation Research Museum of Ontario. Goodwood, Ontario.

Saturday 19th July: 'Arkona/Hungry Hollow fossil trip'

Saturday 13th September: 'Kawartha Lakes Field trip' (Fall)

CREATION CONVERSATIONS online broadcast goes out live on Fridays 9pm British Summer Time. Please check time for your location and join the interaction with the online chatsters and the Creation Research team. Previous broadcasts and upcoming topics can be viewed [here](#).



The Mystery of Multicellular Life

A Quanta Magazine article titled “How Did Life Level Up?” states

“For most of the history of life, which began roughly 3.9 billion years ago, there was only one way to be alive: as a lone cell. Life invented [multicellularity] not once, but at least 20 times. How multicellularity evolved is one of biology’s great mysteries.”

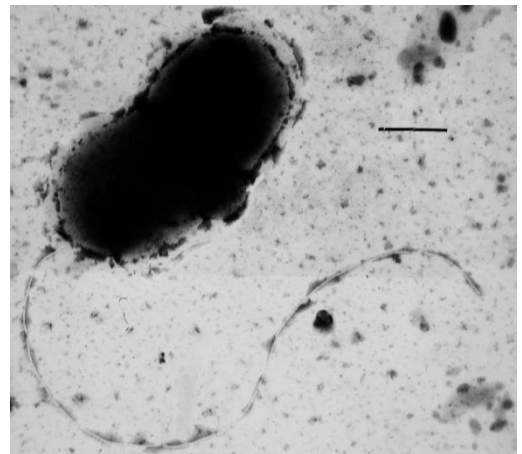
It is only a mystery if you start from the wrong starting place. By assuming the Ruling Theorem that life evolved instead of being created, then explaining the observations will always remain a mystery.

No wonder the author then states:

“The timelines are murky. So are the reasons. And fossil evidence from most of the history of life simply doesn’t exist.”

Did you catch that admission? Fossil evidence does not exist! They acknowledge that they have no observations to support their concept. What fossil evidence do we have? We have stromatolites. Stromatolites are reportedly the oldest fossils, formed by algae secreting a silicone glue-like substance that forms rocks. One stromatolite fossil was classified as the oldest fossil in the world, around 3.7 billion years old. Well, that was until recently when the age was reduced 98% to just a mere 70 million years old. What was the observation that caused this huge reduction of 3 billion 630 million years? They found another fossil in the same layer which could not have evolved into existence until then. So, the rock is aged by the fossil and the fossil is aged by evolutionary assumptions but not observations.

Now that’s cutting-edge science!



Bird Evolution Rewritten Again!

In February 2025 Reuters News announced “Jurassic fossil from China rewrites history of bird evolution” reporting on new research in the journal Nature.

The article says: “*Scientists have unearthed in southeastern China the fossil of a quail-sized bird that lived about 150 million years ago during the Jurassic Period and possessed surprisingly modern traits, a discovery that rewrites the history of avian evolution.*”

The newly identified bird, joins the similarly aged Archaeopteryx, but was far more advanced anatomically and a better flier than crow-sized Archaeopteryx, a creature seemingly half bird and half reptile. Birds evolved from small feathered dinosaurs.”

Note how the article slipped a non-truth in like it is truth, stating birds evolved from dinosaurs. Archaeopteryx is fully bird and not a dinosaur. The leading Paleontologist specializing in the origins of birds, Alan Feduccia, a Distinguished Professor Emeritus at the University of North Carolina said “*Paleontologists have tried to turn Archaeopteryx into an earth-bound feathered dinosaur. But it’s not. It is a bird, a perching bird and no amount of ‘paleobabble’ is going to change that*”

There is no observation, real science, to support this claim that “Birds evolved from dinosaurs” and the authors offer no observations. Nor have any dinosaurs been found with feathers other than in movies and artistic renditions in museums.

In recognition of this, the article clearly states that both Archaeopteryx and the new fossil were both fully birds and the ages presented for the new find means they were there at the same time as dinosaurs not later.



Science Updates with Dr Diane Eager

Chemical Roadmaps for Bumblebees



Flowers named *Impatiens capensis* and *Impatiens pallida* are pollinated by bumblebees, but the flowers have complicated three-dimensional shapes that make it hard for the bees to know where to find the nectar and pollen, especially for first time floral visitors who are unfamiliar with the flowers. To pollinate the flowers the bees must

enter a funnel shaped tube that ends in a nectar spur. According to a group of scientists at Ulm University, Germany, “From the pollinator’s perspective, complex flowers can be reimagined as mechanical puzzles that require the manipulation of a 3D object in search of a concealed reward.”

Scientists have observed bees probing different parts of some flowers before finding their way to enter the flowers in the correct way, so the Ulm University researchers and their colleagues studied two species of Impatiens and their bumblebee pollinators to see if the flowers were providing any guidance to the bees. They suspected bees were actually tasting the flowers so they analysed the chemicals in the tissues from different parts of the flower and in the nectar. They then tested the response of the bees to different chemicals by incorporating them in a sugar solution for the bees to drink. They found the nectar contained a chemical the bees liked, but parts of the flower that were far away from the place where the bees should enter the flowers contained chemicals the bees disliked. The researchers concluded the distribution of different chemicals in the flowers was a “chemosensory roadmap” to guide the bees into the right place to pollinate the flowers as well as deter them from “robbing” the flowers by biting holes in nectar spurs and drinking nectar but not collecting or depositing pollen.

Reference: *Current Biology*, 7 April 2025, doi: 10.1016/j.cub.2025.02.010

Editorial Comment: Even if you have only drawn up a simple “mud map” to show someone where to go, you know it takes forward planning and mutual understanding of the information on the map for it to be effective. Think about what is needed for this system to work. The flowers must have the genes and chemical machinery to be able to make chemicals that bees like and dislike. How would they know what chemicals bees like and dislike? They then have to turn on the genes in the different floral tissues to make the right chemicals in the right parts of the flower. Otherwise, the flowers will not be pollinated and they will die out within a generation. Once again plants and pollinators are irrefutable evidence of creation by God who made functioning living systems, designed to work together, not just individual organisms.

The suggestion about distasteful chemicals deterring nectar robbing is interesting. There is no indication that the chemicals harm the bees. They are just acting as a signal that says “not here”. This is a useful function that would have worked in the original very good world. However, this kind of chemical signalling could be the original basis for some poisonous or distasteful plants in the corrupted fallen world we live in now. If chemicals that were originally designed to be used as signalling devices are activated in the wrong part of the plant or produced in larger amounts they could become dangerous or unpleasant to the point of very distressing. This could easily happen with mutations of gene regulators as plants degenerated as part of the general loss of function that has happened since God cursed the ground as a judgement on human sin and the world has gone downhill ever since.



Shape Shifting Cells Solve Scientific Puzzle

Lymphatic vessels are a system of microscopic tubes found throughout our body tissues that collect fluid that has leaked out of capillaries and needs to be returned to the bloodstream. They have thin walls, one cell thick, and scientists have been intrigued by the shapes of these cells, how they fit together and how they enable the movement of fluid into the vessels. Also, the vessels have to expand and contract in order to cope with everchanging volumes of fluid in the tissues without bursting.

The cells in lymphatic vessel walls have multilobe shapes, like oak leaves or jigsaw puzzle pieces. These cells are like cells on the surface of plant leaves, called puzzle cells, which have interlocking lobed shapes that enable the leaves to cope with fluid pressure changes needed for plant growth and structural support.

New techniques for imaging living cells have enabled scientists at the University of Helsinki to observe how living lymph vessel cells work. The cells do not just abut one another along their edges, like curved paving stones, but have some areas of overlap which can move over one another and allow fluid to flow through into the vessel. The new imaging techniques have also revealed that the cells actively change their shapes so that the area of overlap changes, enabling the vessels to expand and contract as the fluid pressure changes.

The scientists concluded the puzzle shaped cells result from “continuous remodelling of cellular overlaps that maintain vessel integrity while preserving permeable cell–cell contacts compatible with vessel expansion and fluid uptake.”

According to an article in PhysOrg, “The lobate appearance of both plant cells and mammalian lymphatic endothelial cells stands out as a distinctive feature among the diversity of cell shapes that have been observed in nature.” The article goes onto conclude: “This reveals a biological design principle that exists in very diverse species to increase structural stability.”

References: [Nature Video](#) 19 March 2025; [PhysOrg](#) 19 March 2025; [ScienceDaily](#) 20 March 2025; [Nature](#) 19 March 2025 doi:10.1038/s41586-025-08724-6

Editorial Comment: You may have experienced the large changes in fluid volume and pressure that lymphatic vessels have to cope with when your feet and legs swell during a long plane flight. Ultimately this fluid is returned to your blood circulation via the lymphatic system. It was long thought that lymphatic vessels were passive collectors of fluid that relied solely on muscle movement to keep the fluid flowing, but recent studies such as the one described above have shown they are much more dynamic.

The lymphatic system is one of the unsung heroes of the body, and not just as a backup system for fluid collection. As well as tissue fluid it also conveys immune cells and proteins to places where they are needed. As part of the fluid returning system the fluid

is passed through lymph nodes, which are concentrated masses of immune cells that will pick up invading microbes and abnormal cells. Thus, the lymphatic system also functions as a surveillance and repair system to help keep the body healthy.

Note how scientists and journalists cannot avoid the obvious – such a brilliant dynamic, structurally strong system that works in plants and people has to be designed. How sad if they will not acknowledge the Designer, whom they will ultimately have to face in judgement. We are very grateful for new techniques that help us understand how natural systems work, but this new knowledge should be directing scientists, and anyone interested in the world around them, to the Creator, who is Christ.

Useful Links from the Archives: [Lymphatic Control in Tuna Fins](#), [Flexi-cells Explained](#), [Mosquitoes Analyse Flower Chemistry](#)

DIRE WOLVES CONTROVERSY: See our response on the Ask Site [CLICK: https://askjohnmackay.com/have-scientists-really-re-created-dire-wolves/](https://askjohnmackay.com/have-scientists-really-re-created-dire-wolves/)